

COMPUTER USERS OF ERIE

CELEBRATING 37 YEARS SERVING NW PENNSYLVANIA First Programed in 1982

CUE Newsletter - July 2020 (Volume 37 Number 7)



July CUE Meeting

The next CUE members' meeting is on Thursday July 16th at 7:00 PM. No special details are available yet for the meeting. Look for details to be announced at the CUE website.



Visit the CUE Website at:

www.cuerie.com

CUE is a member of APCUG



An International
Association of Technology
& Computer User Groups

CUE Calendar



Calendar events are subject to change. SIG stands for Special Interest Group.
(look for notices outside of the newsletter for delays or special news on meetings)

CUE Membership Meetings (typically 3rd Thursday of each month)
Thursday July 16th at 7 PM
Thursday August 20th at 7 PM

Beginner's User Group (BUG) SIG Meetings
To Be Scheduled Upon Request

Digital Photo SIG Meetings (typically 1st Saturday of each month except June/July/August)
Saturday September 5th at 9:30 AM
Saturday October 3rd at 9:30 AM

Genealogy SIG Meetings (typically 1st Tuesday of each month)
Tuesday July 7th at 7 PM
Tuesday August 4th at 7 PM

MAC SIG Meetings (typically 2nd Saturday of each month except June/July/August)
Saturday September 12th at 9:30 AM
Saturday October 10th at 9:30 AM

Smartphone & Tablet SIG Meetings (typically 4th Monday of each month) (RSVP John Fair)
Monday July 27th at 7 PM
Monday August 24th at 7 PM

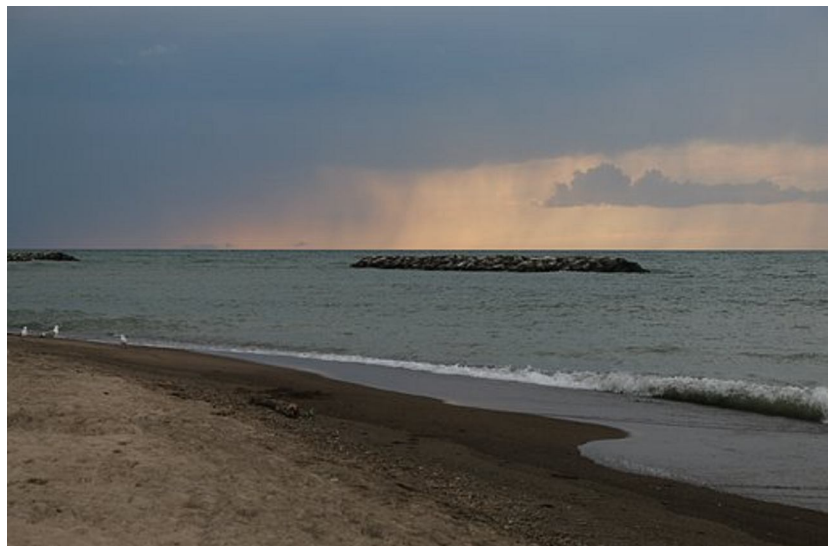
Windows SIG Meetings (typically 2nd Saturday of each month except June/July/August)
Saturday September 12th at 1 PM
Saturday October 10th at 1 PM

CUE Picnic
Thursday September 10th at 6 PM (tentative)

CUE Christmas/Holiday Party
Wednesday December 9th at 6 PM

Save That Date! Thursday September 10th 2020

The Erie Runner's Club pavilion at beach #1 is tentatively reserved for the CUE Picnic!
Try to keep that date open for a possible time of food and fellowship!



Google Photos Videos From Ron Brown

Ron Brown, who spoke on Google Photos at the CUE meeting on 6/18/20, provided the following link that has seven YouTube videos related to Google Photos, including how Ron scanned 153 photos in 13 minutes:

https://www.youtube.com/watch?v=PH47SIxpfEY&list=PLi6B6bF8hCO6hXMLRczesYISIAkx_ui0Z

CUE Election Results

Election of officers and board members took place on the web this year. Congratulations to the chosen and the voters!

The voting results are below. Those elected, match the Slate earlier proposed for the 2020 to 2021 year. You can find contact information for these people, along with others, like SIG Leaders, near the back of the newsletter.

President: **Paul Francis**
Vice President: **John Fair**
Secretary: **Don Grim**
Treasurer: **Janice Castro**

At-Large Board Members:
Hal Kelley
Suzanne Matthews
Susan Mueller
David Runser
Conrad Sobczak

Alternate At-Large Board Members:
Louis Cioccio
Marcia Keller



Credentials!

By Lou Cioccio at Computer Users of Erie

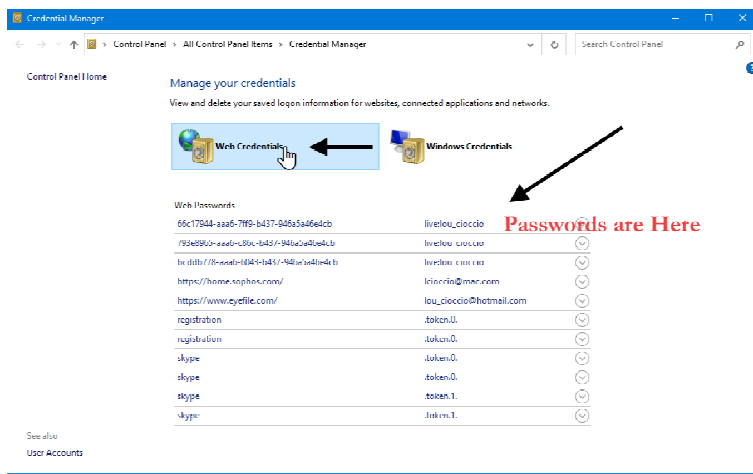
On June 13th we had a zoom Meeting for Mac Users on a particular app called Keychain. While I was doing my search on Keychain, I wanted to know about a similar item that resides naturally in Windows OS.

It is still there but buried in Control Panel that I completely forgot about. Recently we had a stroke in one of our cousins, actually a 1st Cousin for you genealogy experts. He was the son of my late uncle (whom was my dad's brother).

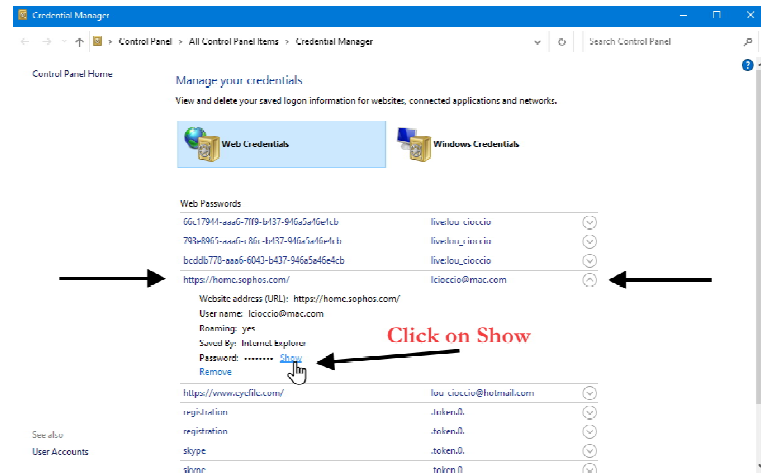
Well my cousin did write down passwords to accounts but cryptically on a sheet of paper. Please have a way that others can find your passwords if you become incapacitated and are unable to even use any limbs or speak clearly!

This will be a future article that needs some collaboration and would be important to ALL of US!

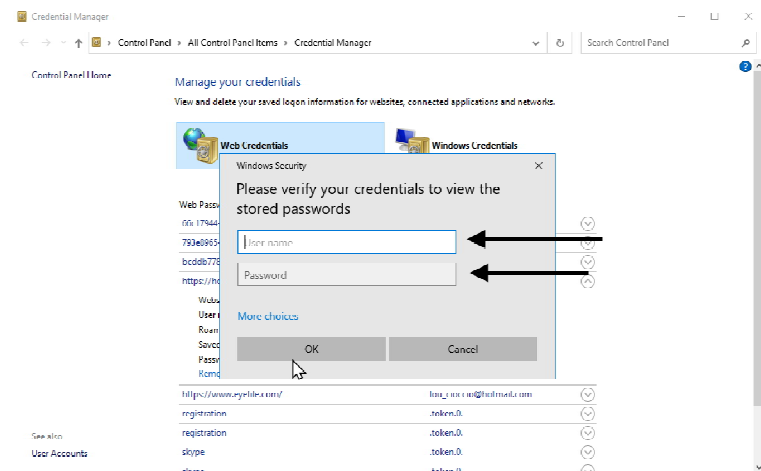
Type in the search line for Credentials and Windows will give you this:



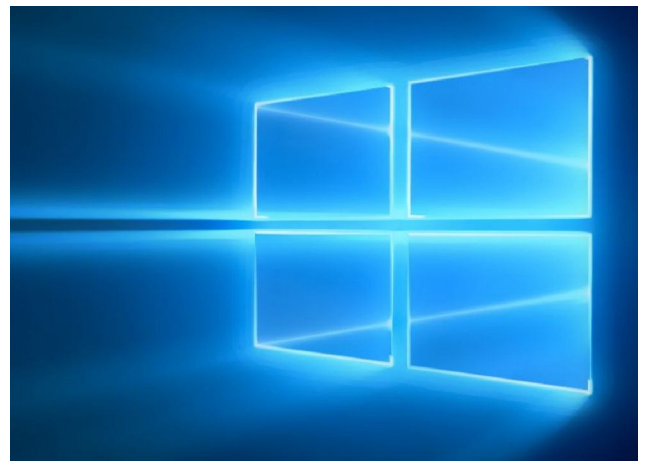
When you click on a line this will open up!



Then a dialog box will come up

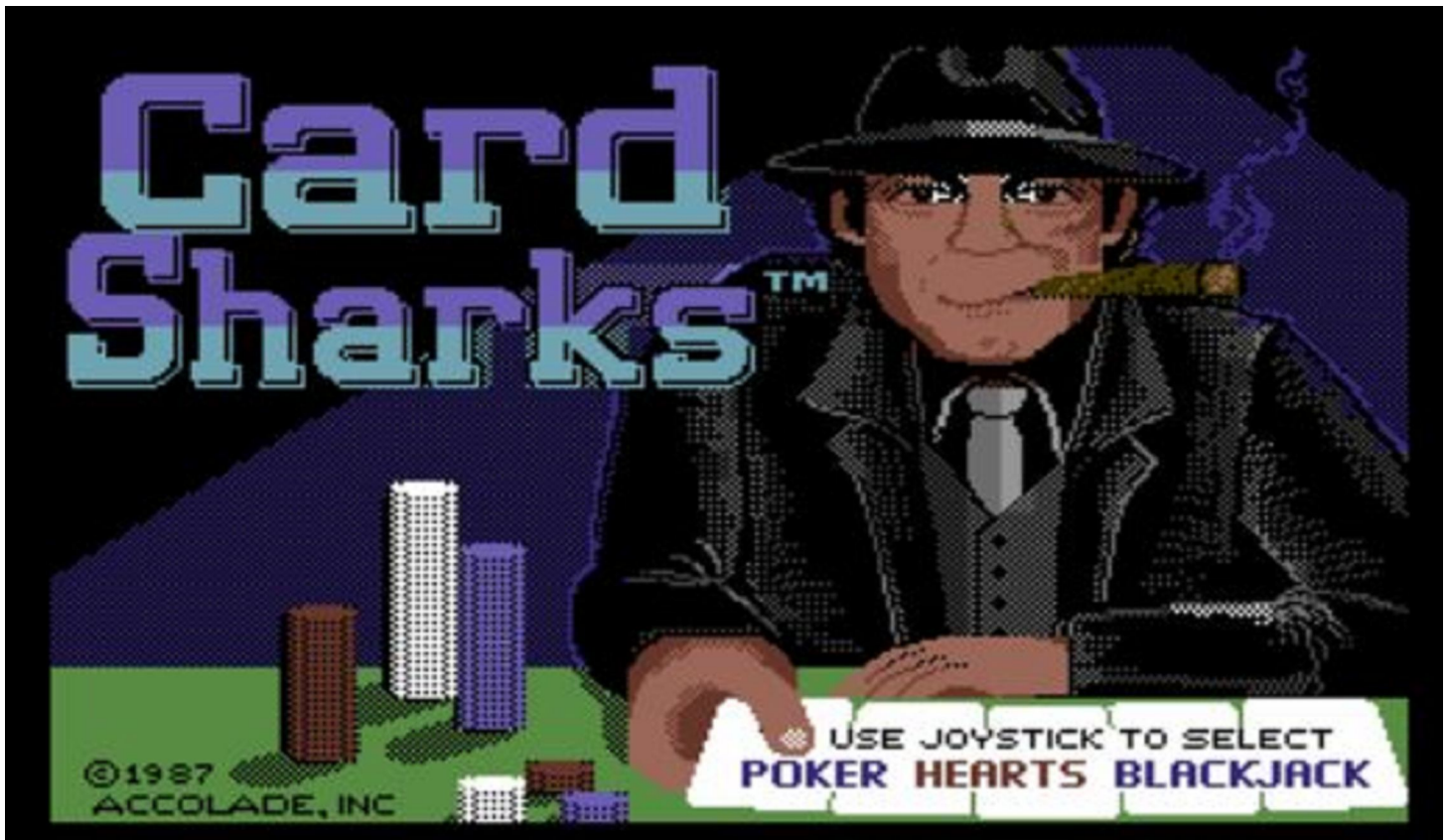


This only works if you KNOW the Logon Password, or are able to guess it, or know how to use terminal and the command line net user to reset the password. That will be for a later article for Windows users!



Back to the Future with Hearts

By Don Grim at Computer Users of Erie



In the 70's, I learned the Hearts card game with friends in High School. It is my favorite card game since then! There can be a little luck with the cards you're dealt but there is, more so, lots of strategy to help you be successful in the game. You can short-suit yourself when you pass three cards, you can try to play with low cards after passing three cards, plus many other strategies. It can be unpredictable at times for you don't know what cards or strategies your opponents are using at the time. Like golf, your goal is to have the lowest accumulative score after so many rounds, usually when someone reaches 100 points. Each heart card adds a point to your scoring and the dreaded Queen of Spades adds 13 points to your score, a card to usually avoid at all costs. However, there is an interesting twist of fate called Shooting The Moon. It can be risky and it

will either award you a big burn or big benefit. If you can manage to collect all the heart cards and Queen of Spades in a round, instead of getting 26 points, you get 0 points, and all opponents get 26 points. If someone can get at least one heart card or the dreaded queen, they will stop you from shooting the moon and you'll be burned with points. Because of the possibility of someone shooting the moon, you don't always have a "good hand" (with a lot of low cards) for you won't be able to stop the shooter. And there is not always a "bad hand" (with a lot of high cards) because it could turn into a shooter's hand. So, there is a lot of interesting thinking in the game!

In the 80's, home computer games came along allowing you to play the Hearts card game anytime with computer opponents,

Back to the Future Continued

without waiting for human opponents. My favorite Hearts card game on the computer is Card Sharks. It was available on the Commodore 64 computer in 1987, two years after the Back to the Future movie. I first saw the game on Mike Murphy's Commodore 64 computer in the 80's. It has nice sound effects and music, plus you can choose opponents like US President Ronald Reagan and Soviet Union Leader Mikhail Gorbachev.

In the 90's, Commodore 64 computers basically wore out but there was a new way to run the old Commodore 64 computer programs and games, on a DOS / Windows computer, called a C64 Emulator. Tom Kuklinski, from CUE, told me about it. It was wonderful, a time machine adventure to an old beloved game! My twin brother, Mark Grim, was a big fan of Hearts so I put it on his DOS / Windows computer.

Recently, my brother asked me about the game. I told him it would be great if we could both run the game again on a modern computer or device. Instead of looking to find it in storage, I looked for new alternatives. I wasn't sure about the C64 emulator from the 90's. Since

Windows 7, you can't run old DOS programs without an emulator like DOS Box. So, it would basically need "double emulation", a DOS emulator running a C64 emulator running a C64 program. Perhaps I can test that someday but I pursued something easier for my brother to use.

I found a more recent C64 emulator that can run on modern Windows versions but I didn't find it user friendly and I would have needed my brother to install it. As another option, I found something that is fairly user friendly and you don't have to install it! It runs on the web in Java Script language!

Now, you still need to download the Card Sharks program, called a Rom, but you can find it easily on the web, including at <https://www.myabandonware.com/game/card-sharks-5hc>. It is called CARDSHRK.D64. It is amazingly just 171 kilobytes in size! It is admirable how efficient code was written then but it was necessary to fit the low memory and disk limits at the time. The Card Sharks program includes Poker and Black Jack games as well as the Hearts game. You could search for other C64 program Rom's and run them on the same emulator.



Back to the Future Continued

Are you ready to go back in time too? Here are instructions to run Card Sharks on any computer or device that accesses the web. You could apply the same instructions for other C64 program Roms.

Have the Rom, called CARDSHRK.D64, already downloaded and know where it is on your computer.

Go to the emulator website at:

https://c64emulator.111mb.de/index.php?site=pp_javascript&lang=en&group=c64

Click once in the box under Drop File.

Browse to where your CARDSHRK.D64 file is on your computer and click the file to highlight it.

Click the Open button.

Wait about 30 seconds for the Card Sharks screen to appear on the screen.

For the Fire button and direction buttons to work during the game, the next step will help for that.

At the drop down that says Joystick On, click that to change it to Joystick Swap Ports.

Click the Fire button until you get to a screen that talks about the Run/Stop button then click the Run/Stop button.

Click the Open C64 Keyboard button.

Click d to disable fast loader.

Click Return then click the x at the top to close the keyboard popup.

Now you can play the game using your mouse to click the Fire button and click direction buttons (left right up down).

If you are not getting sound, click the Sound button to toggle the sound on.

To stop the game, close the browser window.

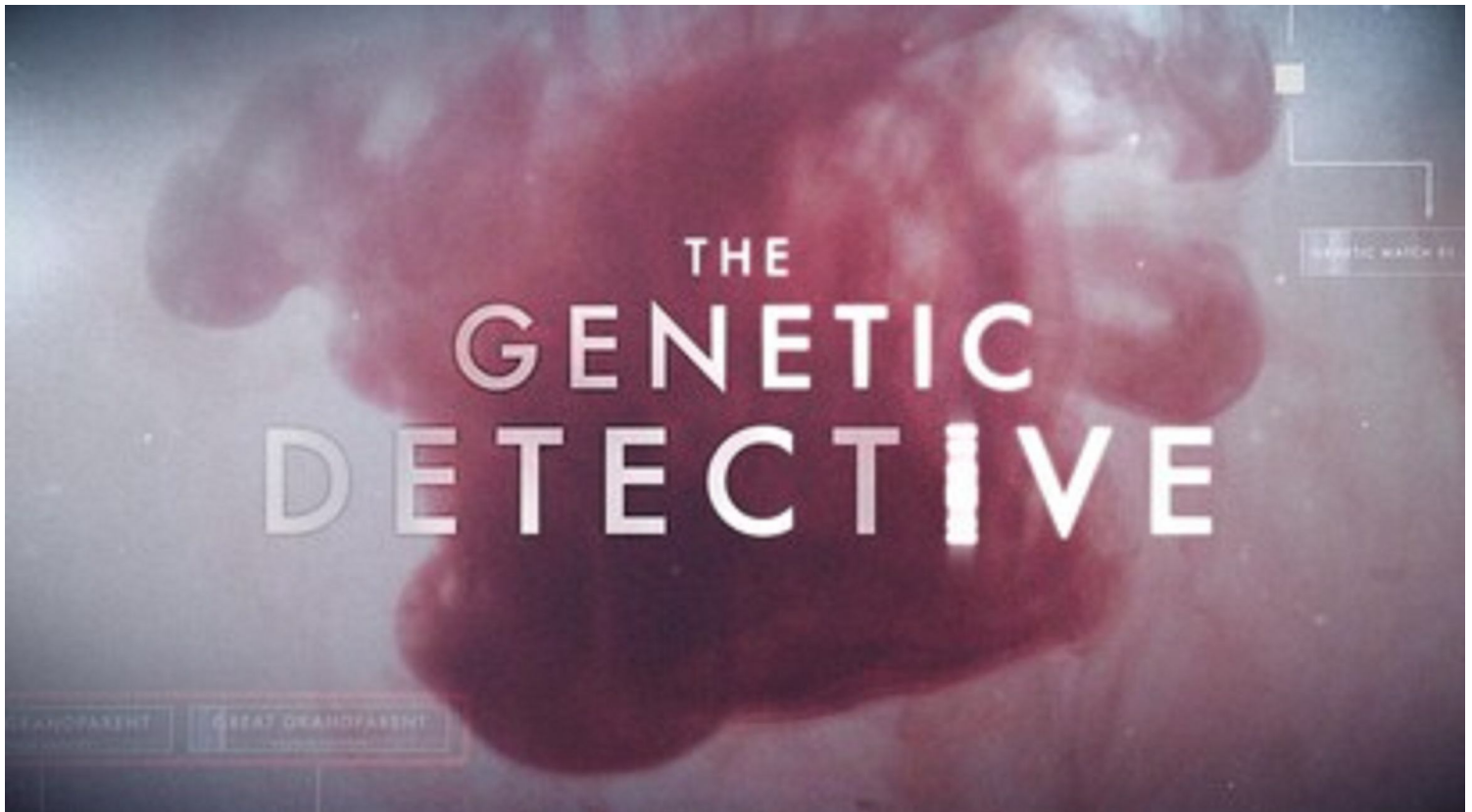
So, modern times have allowed computer time travel in a new web realm! Ronnie and Gorby are back! Enjoy the new time travel to the good ole days!

Genealogy Report for 6/2/20 SIG Meeting

Sue Mueller organized the meeting via Zoom on June 2nd at 7:00 pm. Sixteen attended.

Topics discussed:

- Don Rhodes found mention of his second great grandmother in the Mary Addison Henderson diaries being published in Keystone Kuzzins.
- My Heritage is offering access to one of their collections every day in June.
- Sue M. will send out a list of old British occupations to the members.
- Check out the Facebook page: Random Acts of Genealogical Kindness. It does not assist with living people but does offer help with your research needs.
- Don't give up hope when your queries go unanswered. Some members have received responses as much as ten years after they were initially sent.
- It is important to back up your genealogy research in several ways. It's not IF it will be lost but WHEN.
- Dave Howell has not found any genealogy groups in Nashua where he currently lives so he is glad to attend our Zoom meetings. He and Eta have been re-reading some letters they exchanged before they were married. He said that he had found a good bit of genealogical information in them.
- The second episode of CeCe Moore's show, The Genetic Detective, aired at 10:00 that evening on ABC.



Smartphone & Tablet Report for 6/22/20 SIG Meeting

This Special Interest Group held a Zoom meeting at 7:00 PM on Monday, June 22. During the meeting I was able to share my iPhone and iPad screens via Air Play to my Mac for demonstrations.

Two members had questions which we discussed during the first part of the meeting. We reviewed how to add an email account by going to Settings/Passwords & Accounts/Add Account and choosing the email service provider. The only difficulty might be, if you are adding an older account that you have used for years, you might not be able to locate the password. In my case, when I added my Roadrunner account to my mobile devices, I had to work with Spectrum to retrieve the password.

The second question involved a member not being able to connect to the home wireless router when using an iPhone. The identity of the network showed in Settings/Wi-Fi but touching on the name didn't result in a check mark next to it, which would have indicated a connection. I suggested using a force restart or reboot which usually clears a software glitch like the one being described. The process to force restart depends on the iPhone model and the process for an iPhone XR is somewhat cumbersome and our member could not get it to work. After the meeting I sent him links to two YouTube videos that might help.

After Ron Brown's program at our monthly meeting I was left to wonder how much better Google Photos was versus Apple Photos. Many of the features he touted seemed to be included in Apple Photos. So I combed the literature, read more than half a dozen articles comparing the two and boiled them down into a brief Keynote presentation. The bottom line is that the two have many similar features but Apple Photos is favored for its deep integration in the Apple ecosystem and Google photos is favored for being free and for having a unified library. My conclusion is that I could find no reason to switch from Apple Photos for my personal use.

I introduced the group to the resource iPhone Life Insider, which offers free daily video tips to those who sign up. Several of our members had already signed up for the daily tips. I paid to join the site and get the further benefit of Guides, the iPhone Life Magazine online, and Podcasts. I shared my Mac's screen and logged in to the iphonelife.com website and again promoted the use of password managers by the ease with which I signed in to the site. We looked at a few videos about batteries in one of the Guides.

The next Zoom meeting of this SIG will be held at 7:00 PM on Monday, July 27. The Zoom link will be sent by email. We hope you can join us.

John Fair



Secretary's Report for 6/18/20 CUE Meeting

The members of Computer Users Of Erie (CUE) met remotely on the web with a Zoom video conferencing link.

Ron Brown, part of APCUG, attended as a speaker who shared information on Google Photos.

There were 19 people in attendance, including Ron Brown. Their names on screen were names they chose as login names. Their names on screen were PAUL FRANCIS, Lee Williams, John Fair, Louis Cioccio, Don Rhodes, Judy's Ipad, Suzanne Matthews, James Miller, Jodie Schersten, Ron Brown, iphone 11 marcia ller, Carol Korn, timdonlin, Connie Edwards, Linda Williams, iPad(3) John Szympruch, Conrad, Janice, and DonGrimWithChromebook.

During Ron Brown's presentation at 7:00 PM, he mentioned a free photo editor called Snapseed. He also mentioned that he established a record by scanning 153 photos in 13 minutes. There was Q&A discussion after the presentation.

Paul Francis opened a business meeting at 8:10 PM. John Fair mentioned that 36 out of 77 members voted with unanimous results, matching the proposed candidates slate.

Lou Cioccio mentioned that his Macintosh special interest group meeting had 8 people by way of Zoom video conference.

Janice Castro mentioned that the treasury balance is about \$2,573.69.

Paul Francis reminded members to mail their membership renewal checks to Computer Users of Erie, PO Box 8941, Erie, PA 16505-0941. A mailing is needed since recent meetings are not physical meetings to bring money or a check.

The prior meeting minutes were accepted. John Fair asked members to let him know of topics of interest for speakers for our future meetings.

The meeting was closed about 8:24 PM.

Respectfully Submitted,
Don Grim, Secretary



A Note from the Editor

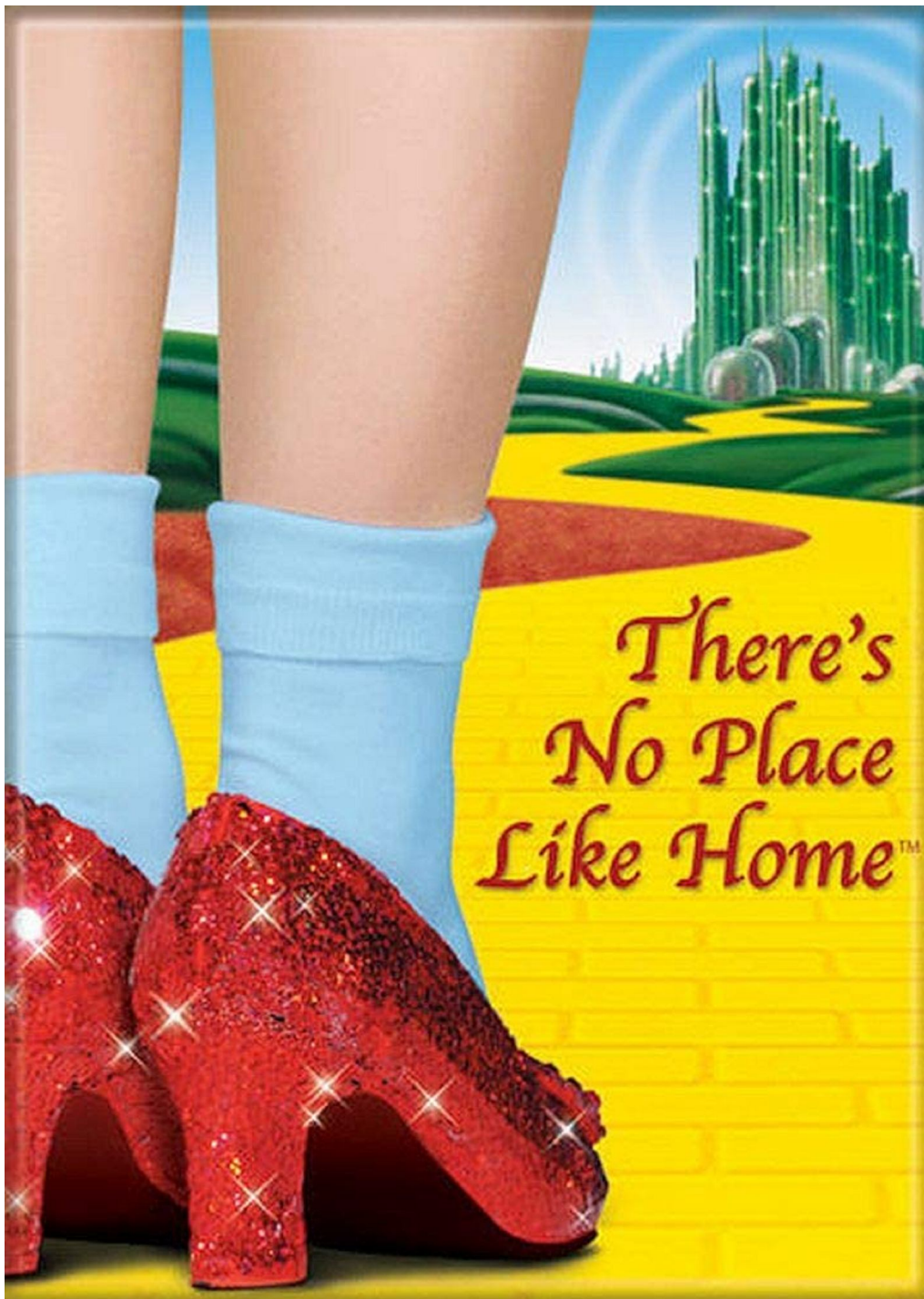
As usual, feel free to contribute information for the CUE newsletter. Whether it is small, large, an article, a tip, information, or pictures, you can send it to me and I will plan to include it in the newsletter. You can reach me at grimcyber@yahoo.com.

Remember that you can find recent news at the CUE website (cuerie.com). At times,

the website will have more recent news than the CUE newsletter since the website is updated continuously and the newsletter is updated monthly.

Stay Safe!

Editorially Speaking, Don Grim



Stay
Home!

Stay
Safe!

PLEASE PRINT

**COMPUTER USERS OF ERIE
MEMBERSHIP APPLICATION**

Today's Date _____

Last Name	First Name
Address	
City, State	Zip
Home Phone	Cell Phone
Your Email	

The yearly dues are payable in August of each year. The dues are \$24 annual.

For NEW members only, when you join outside the annual cycle your initial dues are based upon the month you join. Follow the schedule below.

August \$24	September \$22	October \$20	November \$18
December \$16	January \$14	February \$12	March \$10
April \$8	May \$6	June \$4	July \$2

Information provided on this form will be placed into a CUE Membership Directory

What is your Computer or Device: (Circle)

Windows Mac Android iPhone iPad
Tablet Linux Other

What is your level of expertise? (Circle)

Novice I know some I want to learn more
Expert Geek

Send your completed application
to:

Computer Users of Erie

PO BOX 8941

Erie, Pa 16505-0941

What do you wish to gain by joining Computer Users of Erie?

Student membership is just \$15 per year (provide proof of student status)

CUE Officer Information

Officers

President	Paul Francis	pdfflyer@roadrunner.com	814-882-1175
Vice President	John Fair	johncfair@gmail.com	814-474-3055
Secretary	Don Grim	grimcyber@yahoo.com	814-461-8289
Treasurer	Janice Castro	jcastrocue@outlook.com	312-543-9128

At-Large Board

Hal Kelley	hal_kelley@outlook.com	814-836-1803
Suzanne Matthews	pdxmatthews@aol.com	814-790-4185
Susan Mueller	suepasta@roadrunner.com	814-622-1262
David Runser	ml350djr@gmail.com	814-873-1740
Conrad Sobczak	hatsob@verizon.net	814-899-9699

Alternate At-Large Board

Lou Cioccio	lcioccio@mac.com	814-868-1320
Marsha Keller	dekmak43@gmail.com	814-449-4682

Special Interest Groups

Beginner's (BUG)	Lou Cioccio	lcioccio@mac.com	814-868-1320
Digital Photo	Lou Cioccio	lcioccio@mac.com	814-868-1320
Genealogy	Susan Mueller	suepasta@roadrunner.com	814-622-1262
MAC	Lou Cioccio	lcioccio@mac.com	814-868-1320
Smartphone & Tablet	John Fair	johncfair@gmail.com	814-474-3055
Windows	Lou Cioccio	lcioccio@mac.com	814-868-1320

Other Resources:

CUE Historian	Tom Kuklinski	tkuklinski@gmail.com	814-746-9165
DOS Information	Don Grim	grimcyber@yahoo.com	814-461-8289
Editor	Don Grim	grimcyber@yahoo.com	814-461-8289
Librarian	Tanya Mattson	449t1m@gmail.com	814-833-1404
Membership Chair	John Fair	johncfair@gmail.com	814-474-3055
Webmaster	Tom Kuklinski	tkuklinski@gmail.com	814-746-9165

CUE Disclaimer

The Computer Users of Erie (CUE), a nonprofit affiliate of APCUG, is not connected with, nor does it represent the interests of such organizations as IBM, Apple, Texas Instruments, Microsoft, or any other manufacturer or vendor, nor can it assume responsibility for the accuracy or misrepresentation of materials or statements found in advertisements, articles, announcements, or presentations appearing in its newsletter or at CUE sponsored meetings. The members of the CUE Board of Directors, committees, and SIGs are volunteers giving of their time and energy to assist CUE members through education. CUE shall not be held liable in name or performance for the outcome of activities or agreements to provide services offered by any person in the name of CUE. CUE welcomes comments, letters, original articles and programs for its newsletter. Such materials may be submitted to: CUE Editor, P.O. Box 8941, Erie, PA, 16505-0941. Also you can email grimcyber@yahoo.com. Permission is hereby granted to other nonprofit computer user groups to reprint articles appearing herein, unless specifically restricted, provided credit is given to both its author, if known, and its original source.

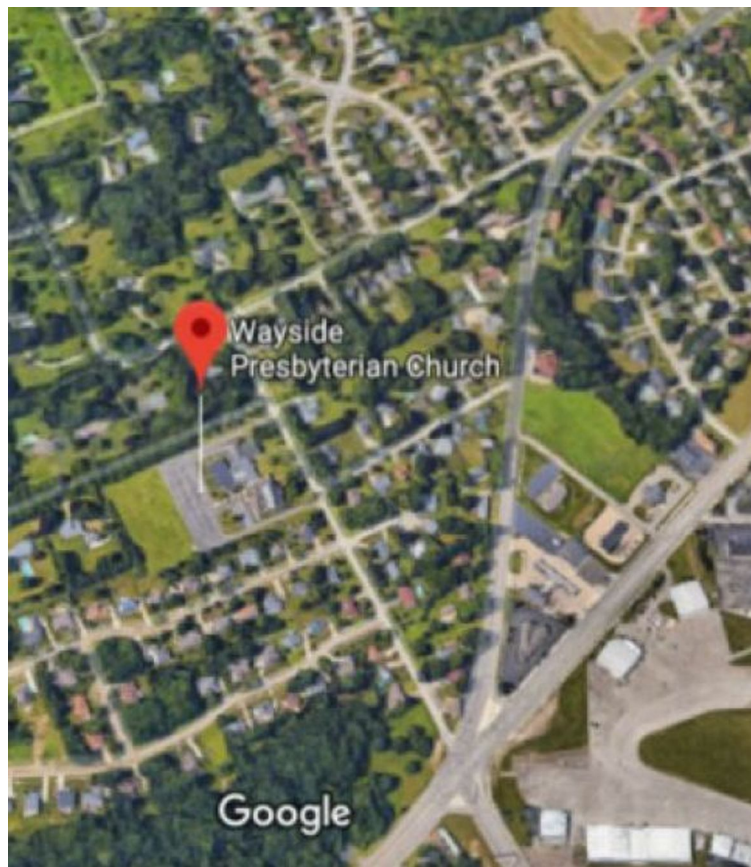
Directions to Wayside Presbyterian Church for CUE Meetings

Wayside Presbyterian Church, at 1208 Asbury Road, is approximately three blocks north of the intersection of Asbury Road and Route 5. This intersection is at the northwest corner of the Erie International Airport property. Following Asbury, turn left at the first marked driveway for the church. During the afternoon winter schedule (10:00 AM for the months of November, January, February and March), entry is through the two sets of blue double doors. Use the buzzer to gain entry if the doors are locked. During the normal evening schedule (7:00 PM the remaining months) use the double doors on the south side of the Christian Education wing. Signs are posted in the building to direct you to the meeting room.

From West of Erie International Airport: Follow Route 5 to the intersection of Asbury and Route 5. Turn hard left onto Asbury Road. Look for the church on the left approximately 3 blocks north of the intersection.

From South of Erie: Take Interstate 79 north to the 26th Street (Route 20) Exit. Bear left onto 26th Street (Route 20) west. Follow Route 20 about 3.4 miles west to Asbury Road. Turn right (at the Sheetz Gas Station) onto Asbury and follow it straight across Route 5. Look for the church on the left approximately 3 blocks north of the intersection.

From East of Erie International Airport: Follow 26th Street (Route 20) west to Asbury Road. Turn right onto Asbury and follow it straight across Route 5. Look for the church on the left approximately 3 blocks north of the intersection. OR, follow 12th Street (Route 5) west past the airport to Asbury Road. Turn right onto Asbury Road. Look for the church on the left approximately 3 blocks north of the intersection.



About the Newsletter

The CUE Newsletter is published monthly by the Computer Users of Erie (CUE), an independent nonprofit computer user group, dedicated to the education and support of our members. The opinions expressed herein are those of the individual authors or the editor, and do not necessarily reflect the opinions of CUE. This publication is Copyright © 2018 by the Computer Users of Erie. All rights reserved. Permission to reprint is hereby granted to any Nonprofit Organization, as long as proper credit is given, or not restricted by the original author or source. **Advertising:** Advertising is welcome from both our members and commercial sources. For current advertising rates, please send an email to the Editor requesting a copy of the Ad Rates file. **Address Changes:** Any recipient of the newsletter is urged to submit a change of address notification to the Editor, either via US Mail to the address shown below, or (preferably) via email, so we may keep our records accurate. **Newsletter Exchange:** CUE welcomes newsletters from other user groups. If you would like to exchange newsletters, either by US Mail or via electronic (Internet) delivery, please send your newsletter to the address listed below. We will add your name to our mailing list and send you our newsletter in return. **Submissions:** Submissions are always welcome from our members or outside sources. Submissions may be articles, images, cartoons, etc. For first time authors, please request a copy of our Submissions Guidelines from the Editor, prior to submitting any items. This will help to eliminate publication delays. Submissions are due by the 5th of each month. **Correspondence:** General correspondence to CUE may be sent via US Mail to: Computer Users of Erie, PO Box 8941, Erie, PA 16505-0941 USA. Email to: cuerie@gmail.com. Editor Email to: grimcyber@yahoo.com.

CUE Membership Benefits



As the largest computer users group in northwest Pennsylvania, CUE has served Erie and surrounding communities since 1982. CUE provides a forum for people to learn about computers and have fun doing so. The group meets the third Thursday each month, with the exception of the months of July and December. In July the group gathers for a picnic and December is the annual holiday party (dates vary). CUE meetings are at Wayside Presbyterian Church, 1205 Asbury Road, Erie. Meetings from April through October are at 7:00 p.m. From November through March, the meetings are at 10:00 AM in the morning.

Our monthly meetings are open to the public regardless of age or ability. Many of our members are senior citizens who span a wide range of capabilities and interests but share a desire to know more about how to use computer related technology. Our role is to provide a forum for continuous learning from each other. CUE has a closed Google gmail group that is used to communicate with members and to post questions/problems to seek answers from the membership. Members pay an annual membership fee of \$24 to receive a membership directory, monthly newsletter, availability to monthly general meetings, and any of the Special Interest Group (SIGs) meetings, usually held in a member's home. Locations and times vary, so check the online EVENTS Calendar on the website for the latest information. SIG topics include:

- Digital photography [and photo safari]
- Genealogy
- Macintosh computers
- Computer troubleshooting
- Beginners users group (BUG)
- Handheld smartphones and tablets

CUE is a member of the Association of Personal Computer User Groups (APCUG). APCUG is an International, platform-independent, volunteer-run, non-profit organization devoted to helping member User Groups offer enhanced services to their members. Some of the membership benefits include:

- Speakers bureau
- Free virtual technology conferences
- Regional conference
- Push newsletter articles
- Discounts and special offers from vendors
- User group newsletters online

Find us online at <http://www.cuerie.com/>. And Facebook @cuerie

Computer Users of Erie
PO Box 8941
Erie, PA 16505-0941

Postmaster:
Address Service Requested



Address label here